

### 7.1.5 GREEN CAMPUS INITIATIVE POLICY

- ❖ The institute strongly believes that a green and a pollution free environment are utmost things to achieve maximum benefit for learning environment to our students as well maintains ecological balance toward society.
- ❖ Our college has vast number of plants and trees along with a medicinal garden to inculcate knowledge in the field of Pharmacognosy.
- ❖ The green initiative policy of our institute are:
  - Cleanliness in and around the campus and waste minimization
  - Water conservation and management including rain water harvesting, etc
  - Using Energy Efficient Light Bulbs.
  - Planting trees for preserving environment in campus.
  - Complete Ban on polythenes at Campus.
  - Digital Library.
  - Institute Community Garden.
  - College Automation Package



*[Handwritten Signature]*

**PRINCIPAL**

**Bharat Institute of Technology**  
Mangalpally (V), Ibrahimpatnam (M),  
R.R. Dist - 501 510, Telangana.

- ❖ In view of Knowledge is of no value unless put into practice; recently, our students have planted many plants in the campus on the eve of World Pharmacist's day 2018 with slogans let's go green to get our globe clean.



College campus & Medicinal garden

#### Digital Library / E-Learning Centre

Use more readout material in soft form. Reduce the hard readout material. Use more of e-mail for officially communicating the information needed, online reading etc.



*[Handwritten signature]*

**PRINCIPAL**  
Bharat Institute of Technology  
Mangalpally (V), Ibrahimpatnam (M),  
R.R. Dist - 501 510, Telangana.





## POLICY:

Greening the grounds is about clearing endlessly inefficient wasteful aspects and utilizing traditional wellsprings of energies for its day by day power needs, right removal dealing with, acquisition of condition well disposed supplies and compelling reusing program. Establishment needs to work out the time bound techniques to actualize green grounds activities. These techniques should be fused into the institutional arranging and planning forms with the point of building up a clean what's more, green grounds.

## Save Energy TIPS:

1. Activate power management features on your computer and monitor so that it will go into a low power "sleep" mode when you are not working on it.
2. Turn off your monitor when you leave your Table.
3. Activate power management features on your laser printer.
4. Whenever possible, shut down rather than logging off.
5. Turn off unnecessary lights and use daylight instead.
6. Avoid the use of decorative lighting.
7. Use LED or compact fluorescent bulbs.
8. Keep lights off in conference rooms, classrooms, lecture halls when they are not in use.
9. Use the fans only when they are needed.



**PRINCIPAL**

Bharat Institute of Technology  
Mangalpally (V), Ibrahimpatnam (M),  
R.R. Dist - 501 510, Telangana.

## PEDESTRIAN FRIENDLY PATHWAY:



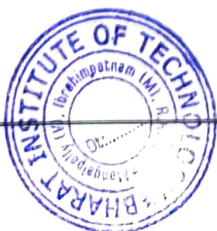
## VEHICLE RESTRICTED IN CAMPUS:

Effects of carbon neutrality:

- ❖ Individual and personal transportation is prohibited in the institution for both safety and pollution free environment.
- ❖ Cigarettes and tobacco products are strictly prohibited in the campus.
- ❖ Students and staff members use college transportation facilities for college, industrial visits etc.



Vehicles are restricted inside the campus



*Ravi*  
**PRINCIPAL**  
Bharat Institute of Technology  
Mangalpally (V), Ibrahimpatnam  
R.R. Dist - 501 510, Telangana.



## PLASTIC FREE CAMPUS:

### Ban on polythenes

As plastic waste has emerged as one of the biggest environmental concerns adversely impacting the soil, water, health and well-being of citizens at large. We have taken the initiation to make the BIT campus "plastic free" by completely banning the plastic.

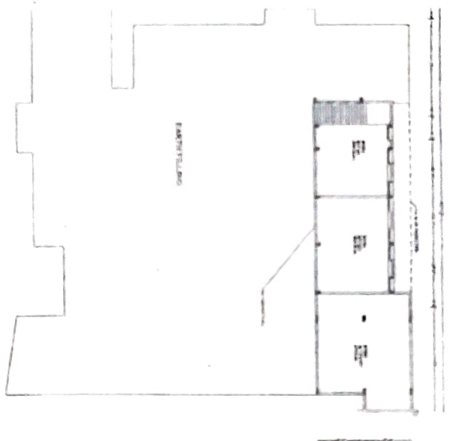
- ❖ The institution has been taken all kind of initiatives for plastic free campus
- ❖ The NSS and college also organized a program for plastic free campus



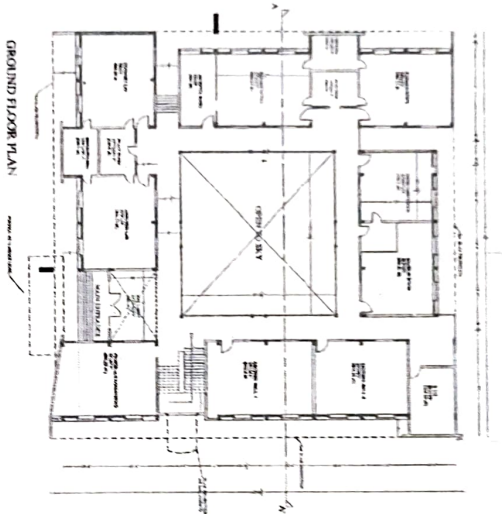
*[Handwritten Signature]*

**PRINCIPAL**

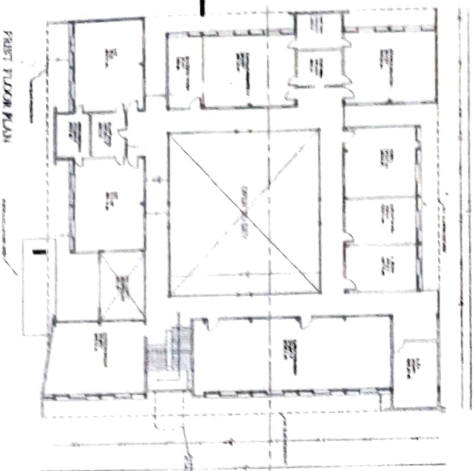
**Bharat Institute of Technology**  
Mangalpally (V), Ibrahimpatnam (M),  
R.R. Dist - 501 510, Telangana.



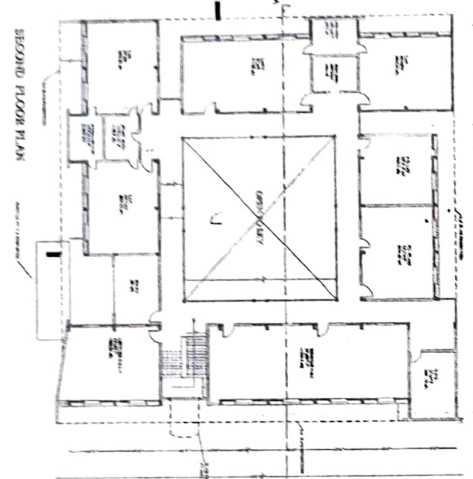
BASMENT FLOOR PLAN



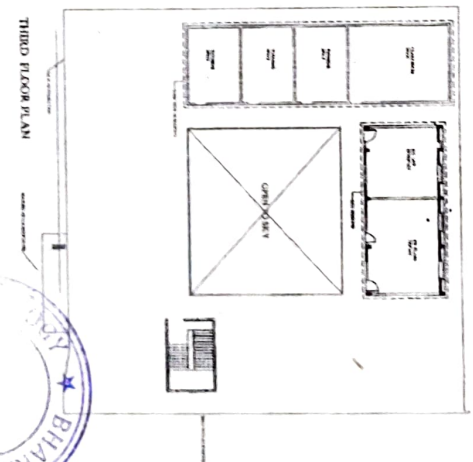
GROUND FLOOR PLAN



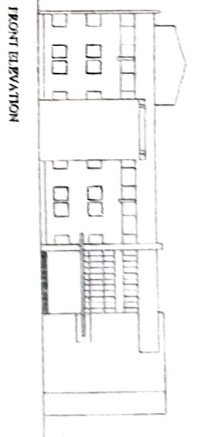
FIRST FLOOR PLAN



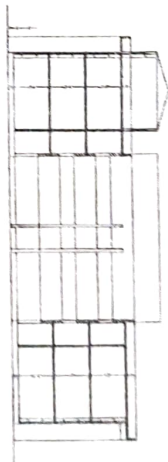
SECOND FLOOR PLAN



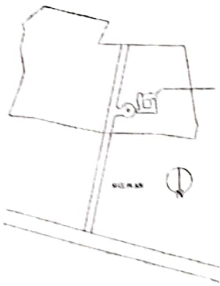
THIRD FLOOR PLAN



FRONT ELEVATION



SECTION AT A-A



## SPECIFICATIONS

FOUNDATION : C.R.S. MASONARY IN CM  
BASEMENT : CRS MASONARY IN CM  
SUPER STRUCTURE : BRICK IN CM  
LINTES&CHAJIAS : RCC  
ROOF, COLUMNS, FOOTINGS : RCC  
PLASTERING-CEMENT  
FLOORING : P. SHABAD STONE  
DOORS&WINDOWS: WOOD&STEEL

## SCHEDULE OF OPENINGS

MAIN DOOR : 2.5x2.5 M  
ALL EXTERNAL DOORS: 1.2x2.3 M  
ALL INTERNAL DOORS: 91x2.5 M  
WINDOWS : 1.37x1.37 M  
VENTILATORS : 91x50 M

## AREAS

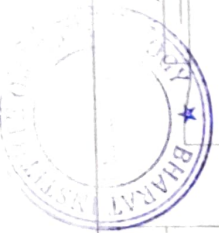
LAND AREA: 5.00 ACRES  
BASEMENT FLOOR: 4090 sq ft (379.53 S. m)  
GROUND FLOOR: 13646 sq ft (1269 Sm)  
FIRST FLOOR: 13266 sq ft (1234 Sm)  
SECOND FLOOR: 13646 sq ft (1269 Sm)  
THIRD FLOOR: 4643 sq ft (431 Sm)  
TOTAL PLINTH AREA: 49781 sq ft (4580 Sm)

REVISED BUILDING IN  
S.NOS 263(P)&264(P)  
FOR CHMR  
EDUCATIONAL  
SOCIETY AT  
MANGALPALLY (V),  
IBRAHIMPATNAM(MDL)  
R.R DIST, T.S

SCALE: 1/16

PROPOSED: \_\_\_\_\_

OWNERS SIGNATURE \_\_\_\_\_



### 7.1.5 Green practices

- Students , staff using
  - a) Bicycles
  - b) Public transport
  - c) Pedestrian friendly roads
- Plastic free campus
- Paperless office
- Green landscaping with trees and plants

**TRANSPORTATION:**

Bharat Institutions has a vast number of buses (40 in number) and provides bus facility for the staff and students from every corner of the city. Usage of Private transportation like own vehicles/bikes is not encouraged in the campus. It is mandatory to use public or college transport for both safety and eco-friendly nature. Local students are encouraged to come to college on bicycles for pollution free environment. All the college buses and vehicles used by the college members are having PUC certification, which is renewed regularly.

## PLASTIC FREE CAMPUS:

College provides bags with logo and discourages the use of plastic bags. Day to day classes for the students is taught about the health hazards of plastic and simultaneously display boards displaying SAY NO TO PLASTIC/PLASTIC FREE are displayed in the campus. Tea cups and glasses for water made of stainless steel and glass are used instead of disposable plastic cups and glasses at college canteen.

### PAPERLESS OFFICE:

Due to the advanced technology it became easier for maintaining paperless office. Collection of student fee from written paper document is changed to online payments for saving paper. Most of the communications in the college, greetings, official communications etc. are done by e mail and social media. Unless and until required paper printouts are not taken and most of the work is done by soft copies.

## GREEN LANDSCAPING WITH TREES AND PLANTS:

**70%** of the campus is covered by lush greenery with lawns and beautiful trees. A medicinal/herbal garden which is helpful for learning. Plantation is done regularly by our staff and students. Recently, on the eve of world Pharmacist's day many plants were planted with slogans go green and keep our globe clean. Separate guards are paid for the maintenance of the greenery

**PRINCIPAL**  
Bharat Institute of Technology  
Mangalpally (V), Ibrahimpatnam (M),  
R.R. Dist - 501 510, Telangana.

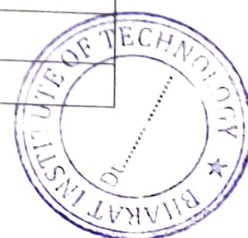




# LIST OF MEDICINAL PLANTS IN BIT

SL. NO	Name of the plant	Number of plants
1	Ashwagandha	05
2	Ajwain	01
3	Arjuna	01
4	Aloe	06
5	Amla	01
6	Bael	01
7	Brahmi	05
8	Citronella	05
9	Guggul	02
10	Khus	02
11	Jute	01
12	Mango	01
13	Neem	03
14	Vinca	06
15	Tulsi	06
16	Sapota	01
17	Coconut	01
18	Vasaka	01
19	Tippateega	01
20	Seema buruga	01
21	Lemon	01
22	Tangadu	01
23	Ginger	01
24	Henna	01
25	Kalmegh	01
26	Saraswati	05
27	Adatoda	05
28	Allaneredu	01
29	Jilledu	01
30	Ganneru	01


**PRINCIPAL**  
 Bharat Institute of Technology  
 Mangalpally (V), Ibrahimpatnam (M),  
 R.R. Dist - 501 510, Telangana






### TREES IN BIT CAMPUS

SL.No	Name of the tree	Count
1	Neam Trees	412
2	Acasia trees	450
3	Areca Catechu Trees	340
4	Wild Trees	410
5	Birch Trees	446
6	Cactus Trees	320
7	Cedar Trees	458
8	Chinar Trees	380

  
**PRINCIPAL**  
Bharat Institute of Technology  
Mangalpally (V), Ibrahimpatnam (M),  
R.R. Dist.- 501 510. Telangana.



31	Karanj	01
32	Veld grape	01
33	Pomegranate	02
34	Shikakai	01

  
**PRINCIPAL**  
**Bharat Institute of Technology**  
**Mangalpally (V), Ibrahimpatnam (M),**  
**R.R. Dist - 501 510. Telangana.**





## GREEN INITIATIVES

### MEDICINAL GARDEN

